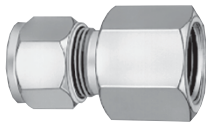


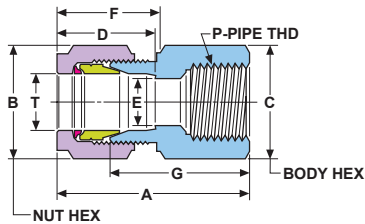
Female Connector: CF

connects fractional tube to male NPT threads

Part Number*	T Tube O.D.	P Male NPT Size	Dimensions — inches						
			A	B Hex Flat	C Hex Flat	D	E min.	F	G
1CF1[]	1/16	1/16	1	5/16	7/16	.41	.05	.48	.78
1CF2[]	1/16	1/8	1.03	5/16	9/16	.41	.05	.48	.81
2CF2[]	1/8	1/8	1.19	7/16	9/16	.56	.09	.67	.88
2CF4[]	1/8	1/4	1.38	7/16	3/4	.56	.09	.67	1.06
3CF2[]	3/16	1/8	1.22	1/2	9/16	.59	.13	.70	.91
3CF4[]	3/16	1/4	1.41	1/2	3/4	.59	.13	.70	1.09
4CF2[]	1/4	1/8	1.25	9/16	9/16	.69	.19	.77	.94
4CF4[]	1/4	1/4	1.44	9/16	3/4	.69	.19	.77	1.13
4CF6[]	1/4	3/8	1.50	9/16	7/8	.69	.19	.77	1.19
4CF8[]	1/4	1/2	1.70	9/16	1 1/16	.69	.19	.77	1.38
6CF2[]	3/8	1/8	1.34	11/16	5/8	.72	.30	.83	1
6CF4[]	3/8	1/4	1.53	11/16	3/4	.72	.30	.83	1.19
6CF6[]	3/8	3/8	1.59	11/16	7/8	.72	.30	.83	1.25
6CF8[]	3/8	1/2	1.78	11/16	1 1/16	.72	.30	.83	1.44
6CF12[]	3/8	3/4	1.92	11/16	1 1/4	.72	.30	.83	1.56
8CF4[]	1/2	1/4	1.72	7/8	13/16	.97	.42	.92	1.25
8CF6[]	1/2	3/8	1.72	7/8	7/8	.97	.42	.92	1.25
8CF8[]	1/2	1/2	1.91	7/8	1 1/16	.97	.42	.92	1.44
8CF12[]	1/2	3/4	2.06	7/8	1 1/4	.97	.42	.92	1.59
8CF16[]	1/2	1	2.50	7/8	1 5/8	.97	.42	.92	1.94
10CF6[]	5/8	3/8	1.69	1	15/16	1	.50	.92	1.25
10CF8[]	5/8	1/2	1.88	1	1 1/16	1	.50	.92	1.44
12CF8[]	3/4	1/2	1.94	1 1/8	1 1/16	1	.66	.97	1.25
12CF12[]	3/4	3/4	2	1 1/8	1 1/4	1	.66	.97	1.56
14CF12[]	7/8	3/4	2	1 1/4	1 1/4	1.06	.72	.97	1.56
16CF12[]	1	3/4	2.19	1 1/2	1 3/8	1.31	.88	1.08	1.63
16CF16[]	1	1	2.53	1 1/2	1 5/8	1.31	.88	1.08	1.97
20CF20[]	1 1/4	1 1/4	2.98	1 7/8	2 1/8	1.62	1.09	1.53	1
24CF24[]	1 1/2	1 1/2	3.28	2 1/4	2 3/8	1.97	1.34	1.78	1.09
32CF32[]	2	2	4	3	2 7/8	2.66	1.81	2.47	1.12



Metric fitting shown



Female Connector: CF/ME

connects metric tube to male NPT threads

Part Number*	T Tube O.D.	P Male NPT Size	Dimensions—mm						
			A	B Hex Flat	C	D	E min.	F	G
3CF4[]ME	3	1/8	32.1	11.1	14.5	14.3	2.2	17.1	24.1
3CF4[]ME	3	1/4	34.9	11.1	19.1	14.3	2.2	17.1	27.0
6CF2[]ME	6	1/8	31.9	14.3	14.5	16.3	3.8	19.5	23.9
6CF4[]ME	6	1/4	36.4	14.3	19.1	16.3	3.8	19.5	28.5
6CF6[]ME	6	3/8	39.6	14.3	22.2	16.3	3.8	19.5	31.2
6CF8[]ME	6	1/2	43.3	14.3	27.0	16.3	3.8	19.5	35.0
8CF2[]ME	8	1/8	32.6	15.9	14.3	16.7	5.8	19.1	24.6
8CF4[]ME	8	1/4	37.4	15.9	19.1	16.7	5.8	19.1	29.4
8CF6[]ME	8	3/8	38.2	15.9	22.2	16.7	5.8	19.1	30.2
8CF8[]ME	8	1/2	44.5	15.9	27.0	16.7	5.8	19.1	36.5
10CF2[]ME	10	1/8	33.4	19.1	17.5	17.5	7.9	19.8	25.4
10CF4[]ME	10	1/4	38.1	19.1	19.1	17.5	7.9	19.8	30.2
10CF6[]ME	10	3/8	39.7	19.1	22.2	17.5	7.9	19.8	31.8
10CF8[]ME	10	1/2	44.5	19.1	27.0	17.5	7.9	19.8	36.5
12CF4[]ME	12	1/4	43.7	22.2	20.6	24.6	9.9	23.4	31.8
12CF6[]ME	12	3/8	43.7	22.2	20.6	24.6	9.9	23.4	31.8
12CF8[]ME	12	1/2	48.5	22.2	27.0	24.6	9.9	23.4	36.5
12CF12[]ME	12	3/4	52.4	22.2	31.8	24.6	9.9	23.4	40.5
14CF4[]ME	14	1/4	41.1	23.8	23.8	22.2	11.9	21.0	31.2
14CF8[]ME	14	1/2	45.9	23.8	27.0	22.2	11.9	21.0	36.5
15CF8[]ME	15	1/2	46.3	23.8	27.0	22.2	12.7	21.8	36.0
16CF8[]ME	16	1/2	47.7	25.4	27.0	25.0	12.7	23.4	36.5
16CF12[]ME	16	3/4	53.0	25.4	32.0	25.0	12.7	23.4	41.0
18CF8[]ME	18	1/2	48.1	28.6	27.0	25.4	15.8	24.6	38.1
18CF12[]ME	18	3/4	49.8	28.6	31.8	25.4	15.8	24.6	39.9
20CF8[]ME	20	1/2	52.5	31.8	30.2	31.0	16.7	27.0	38.6
20CF12[]ME	20	3/4	53.5	31.8	31.8	31.0	16.7	27.0	39.6
22CF8[]ME	22	1/2	49.3	31.8	33.3	27.0	17.8	24.6	38.1
22CF12[]ME	22	3/4	53.8	31.8	33.3	27.0	17.8	24.6	42.7
22CF16[]ME	22	1	61.0	31.8	41.5	27.0	17.8	24.6	50.0
25CF8[]ME	25	1/2	55.8	38.1	34.9	33.3	11.9	27.4	41.4
25CF12[]ME	25	3/4	56.0	38.1	35.0	33.3	21.7	27.4	41.0
25CF16[]ME	25	1	64.4	38.1	41.3	33.3	21.7	27.4	50.0

* [] see page 6 for material specifications.