

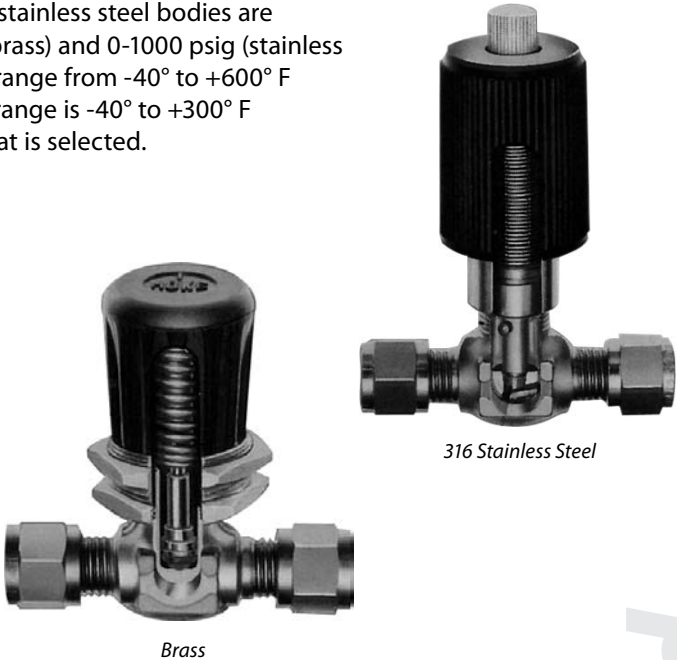


# 4100 Series

316 Stainless Steel or Brass Bellows Sealed Valves  
(.060"/1.5 mm or .170"/4.3 mm orifices)

## Introduction

With its compact size suitable for confined spaces, the 4100 Series design includes an internal volume of only 0.08 cubic inches. Brass and 316 stainless steel bodies are available. Operating pressures range from 0 - 600 psig (brass) and 0-1000 psig (stainless steel). 316 stainless steel operating temperature ratings range from -40° to +600° F (-40° to +316° C), while the brass operating temperature range is -40° to +300° F (-40° to +149° C) depending on whether a hard or soft seat is selected.



## Typical Applications

### Stainless steel valves

- Critical gas analysis
- High temperature liquid metals
- Handling reactive and toxic fluids
- Vacuum system bake-out

### Brass valves

- Sampling systems
- Gas analysis equipment
- Laboratory service
- Instrumentation

## Features & Benefits

- Low internal volume for gas analysis
- Panel mounting is available (specify kit 4100K1)

### Stainless steel valves

- Choice of blunt or regulating stem points
- Seal welded bellows to body

### Brass valves

- Phosphor bronze bellows silver-soldered to body and stem isolates fluid from atmosphere
- Choice of vee stem with small orifice for metering, blunt point, or PCTFE stem
- Special High Tolerance NPT Thread

## Technical Data

	316 STAINLESS STEEL	BRASS
MAXIMUM OPERATING PRESSURE	Vacuum to 1000 psig (70 kg/cm <sup>2</sup> )	Vacuum to 600 psig @ 70° F (45 kg/cm <sup>2</sup> @ 21° C)
TEMPERATURE RANGE	-40° F to +600° F (-40° C to +316° C)	Hard seat: -40° F to +300° F (-40° C to +149° C) Soft seat: -40° F to +250° F (-40° C to +121° C)
ORIFICE SIZE	Vee stem: 0.059 (1.5 mm) Blunt stem: 0.170 (4.3 mm)	Vee stem: 0.060 (1.5 mm) Blunt stem: 0.170 (4.3 mm) PCTFE stem: 0.170 (4.3 mm)
Cv FACTOR	0.35 (maximum)	0.35 (maximum)
INTERNAL VOLUME	0.08 cubic inches	0.08 cubic inches

## HOKE Incorporated

405 Centura Court • PO Box 4866 (29305) • Spartanburg, SC 29303  
Phone (864) 574-7966 Fax (864) 587-5608  
www.hoke.com • sales@hoke.com

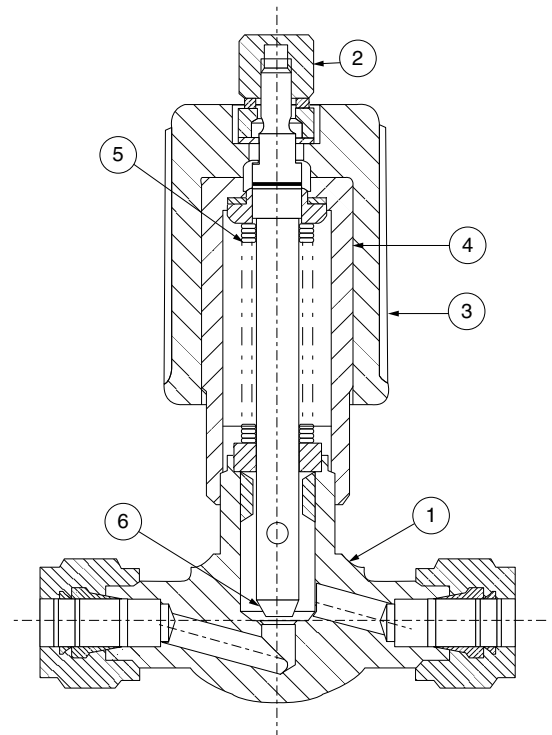
packless valves

# 4100 Series

## Materials of Construction

### 316 Stainless Steel

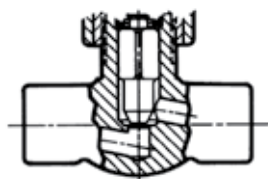
	DESCRIPTION	MATERIAL
1	Body	316 stainless steel
2	Cap nut	Brass, nickel-plated
3	Handle, outer	Nylon
4	Handle, inner	Brass, nickel-plated
5	Bellows	316 stainless steel
6	Stem point	316 stainless steel
7	Panel mounting kit	Brass, nickel-plated



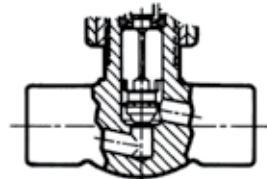
## Materials of Construction

### Brass

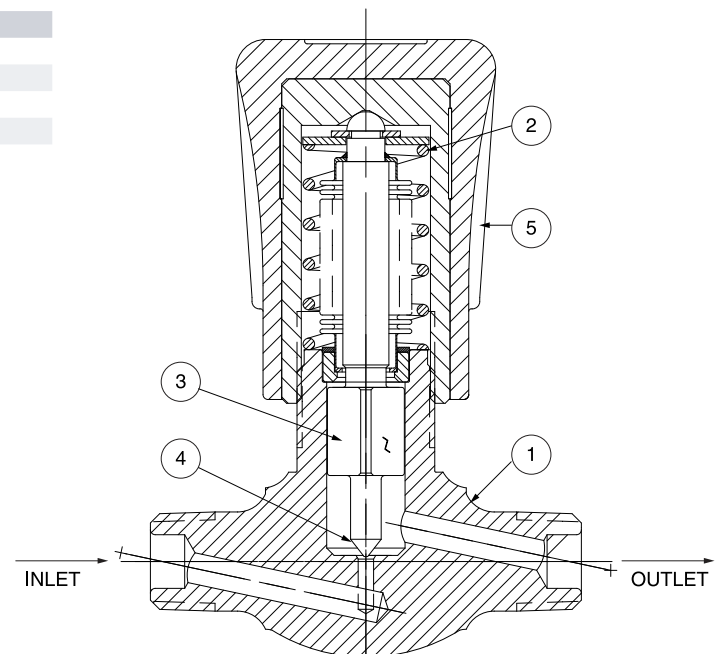
	DESCRIPTION	MATERIAL
1	Body	Forged brass
2	Bellows	Phosphor bronze silver-soldered to body
3	Stem	316 stainless steel
4	Stem tip	PCTFE
5	Handle	Nylon with brass insert



Blunt Stem  
4111M4B



PCTFE Stem  
4151M4B



Vee Stem  
4171M4B

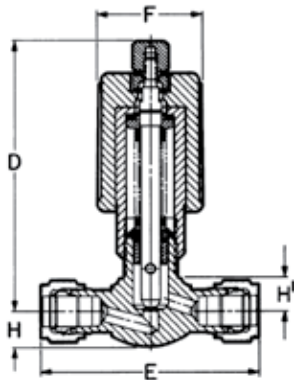
# 4100 Series

## Dimensions

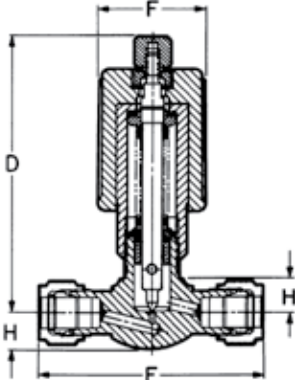
### Stainless Steel

CONNECTIONS		D	E	F	H	H1	PANEL MOUNTING	
							HOLE SIZE	MAX. THICKNESS
¼" NPT Male	inch	3	1 ¾	1	2 ⅝	1 ⅝	1 ⅝	¼
	mm	76	44	25	10	9	26	6
¼" O.D. Tube Gyrolok®	inch	3	2 ⅜	1	2 ⅝	1 ⅝	1 ⅝	¼
	mm	76	60	25	10	9	26	6
6 mm Gyrolok®	inch	3	2 ⅜	1	2 ⅝	1 ⅝	1 ⅝	¼
	mm	76	60	25	10	9	26	6

Dimensions for reference only, subject to change.



Blunt Stem  
4112G4Y



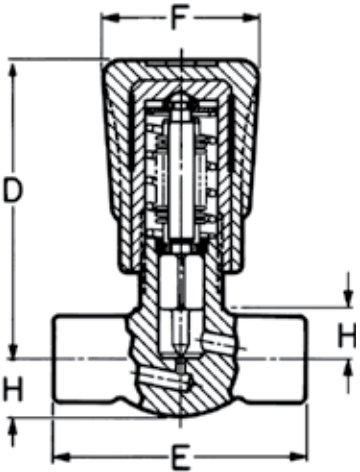
Vee Stem  
4172G4Y

## Dimensions

### Brass

CONNECTIONS		D	E	F	H	H1	PANEL MOUNTING	
							HOLE SIZE	MAX. THICKNESS
⅛" NPT Male	inch	2 ⅝	1 ¾	1 ⅙	2 ⅝	¾	1 ⅝	¼
	mm	67	44	27	9	10	26	6
¼" NPT Male	inch	2 ⅝	1 ¾	1 ⅙	2 ⅝	¾	1 ⅝	¼
	mm	67	44	27	9	10	26	6
¼" O.D. Tube Gyrolok®	inch	2 ⅝	1 ¾	1 ⅙	2 ⅝	¾	1 ⅝	¼
	mm	67	60	27	9	10	26	6

Dimensions for reference only, subject to change.



Vee Stem  
4171M4B

# 4100 Series

## How to Order

**Stainless Steel:** Order valve by part number shown in chart.

CONNECTIONS	ORDER BY PART NUMBER			
	BLUNT STEM	VEE STEM	CV FACTOR	ORIFICE
¼" NPT Male	4112M4Y	—	0.35	0.17
¼" O.D. Tube Gyrolok®	—	4172G4Y	0.059	0.06
¼" O.D. Tube Gyrolok®	4112G4Y	—	0.35	0.17
6 mm Gyrolok®	4112G6Y/MM	—	0.35	0.17
6 mm Gyrolok®	—	4172G6Y/MM	0.059	0.06
Panel Mounting Kit	4100K1	4100K1	—	—

**Brass:** Order valve by part number shown in chart.

CONNECTIONS	ORDER BY PART NUMBER				
	BLUNT STEM	VEE STEM	PCTFE STEM	CV FACTOR	ORIFICE
½" NPT Male	4111M2B	—	4151M2B	0.35	0.17
½" NPT Male	—	4171M2B	—	0.059	0.06
½" NPT Male	4111L2B	—	—	0.35	0.17
¼" NPT Male	4111M4B	—	4151M4B	0.35	0.17
¼" NPT Male	—	4171M4B	—	0.059	0.06
¼" O.D. Tube Gyrolok®	—	—	4151G4B	0.35	0.17

## Panel Mounting

To order Panel Mounting Kit, specify part number 4100K1.

### FOR YOUR SAFETY

IT IS SOLELY THE RESPONSIBILITY OF THE SYSTEM DESIGNER AND USER TO SELECT PRODUCTS SUITABLE FOR THEIR SPECIFIC APPLICATION REQUIREMENTS AND TO ENSURE PROPER INSTALLATION, OPERATION AND MAINTENANCE OF THESE PRODUCTS. MATERIAL COMPATIBILITY, PRODUCT RATINGS AND APPLICATION DETAILS SHOULD BE CONSIDERED IN THE SELECTION. IMPROPER SELECTION OR USE OF PRODUCTS DESCRIBED HEREIN CAN CAUSE PERSONAL INJURY OR PROPERTY DAMAGE.